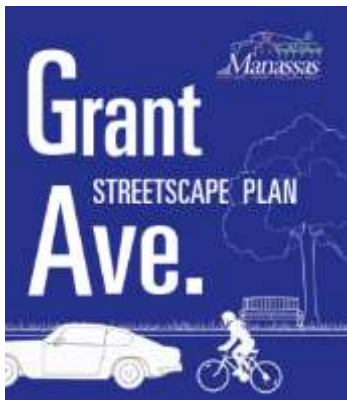


Grant Avenue Streetscape Project

June 29, 2016



Welcome



- Streetscape improvements to Grant Avenue from Lee Avenue to Wellington Road
- Preliminary planning and design funded

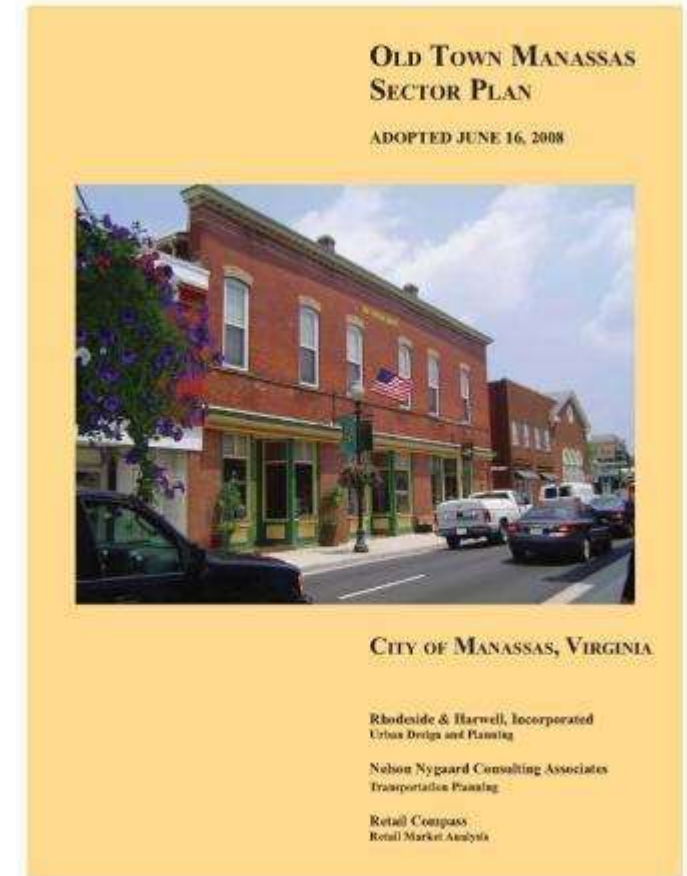


Background



Downtown Street Improvement Recommendations:

- Install refuge islands along Grant Avenue at each intersection.
- Extend boulevard streetscape treatments on Grant Avenue similar to those found on the northern end of Grant Avenue.
- Widen all downtown sidewalks where possible; enhance streetscapes; consider building-mounted, hanging street lights to provide more space on sidewalks for trees, planters, and pedestrians.

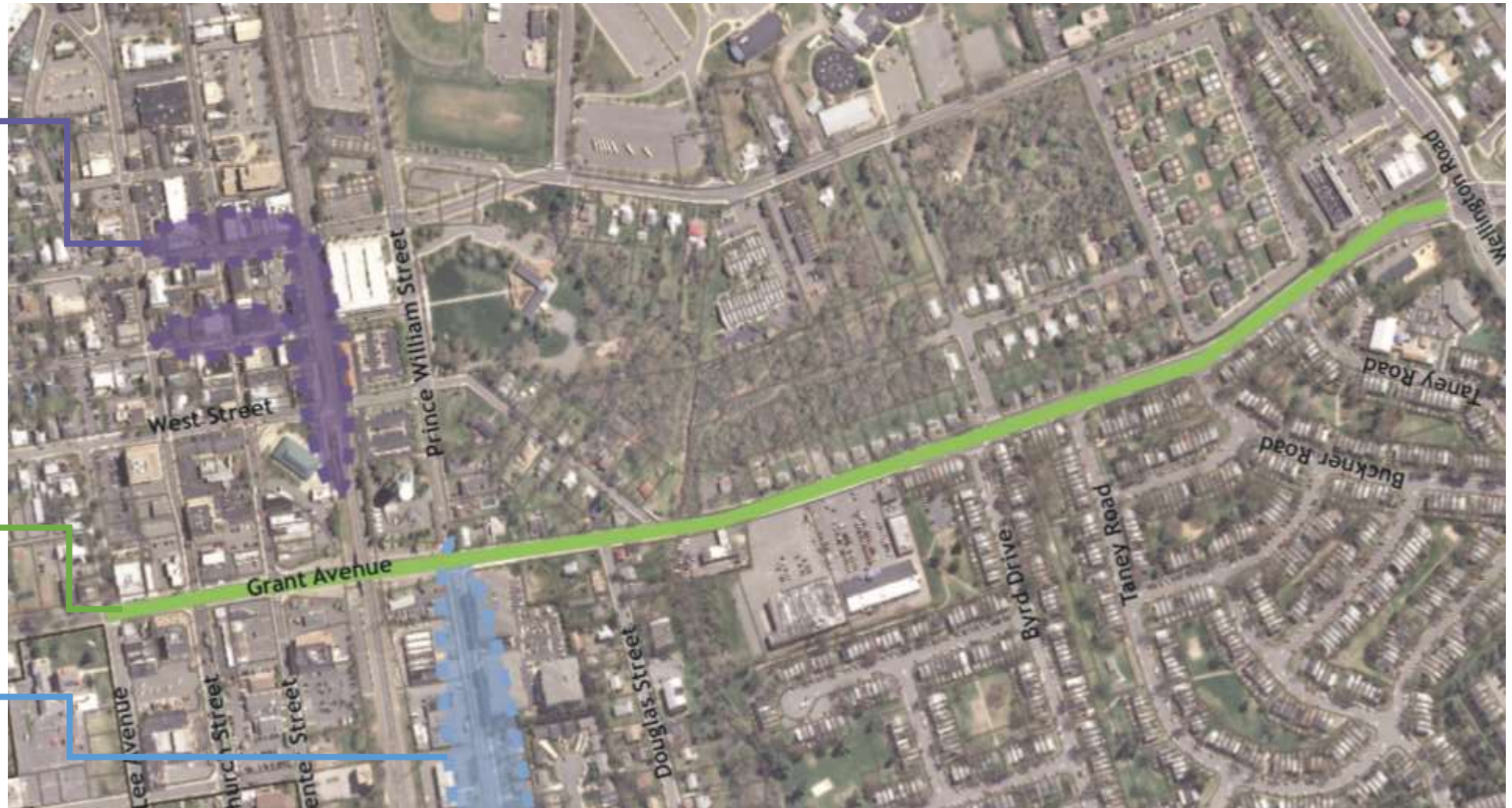


Grant Avenue Corridor

Downtown
Streetscape

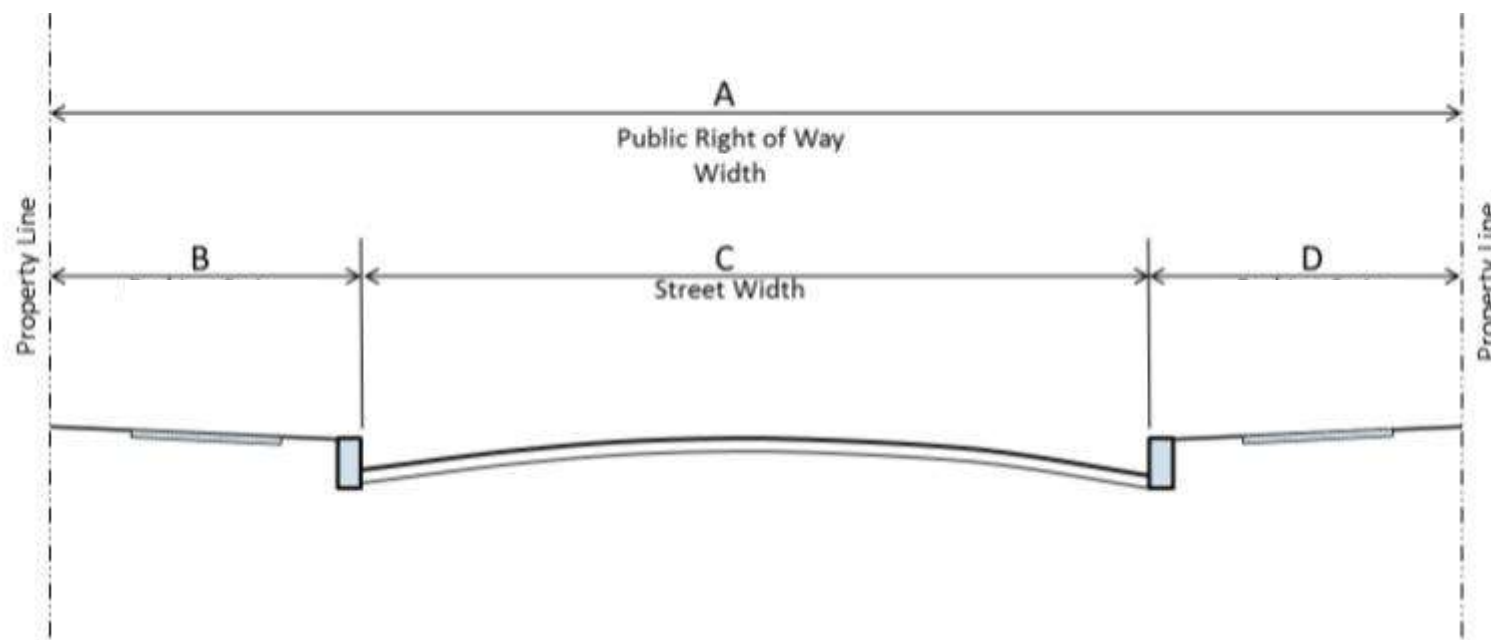
Grant Ave.
Streetscape

Prince William St.
Streetscape



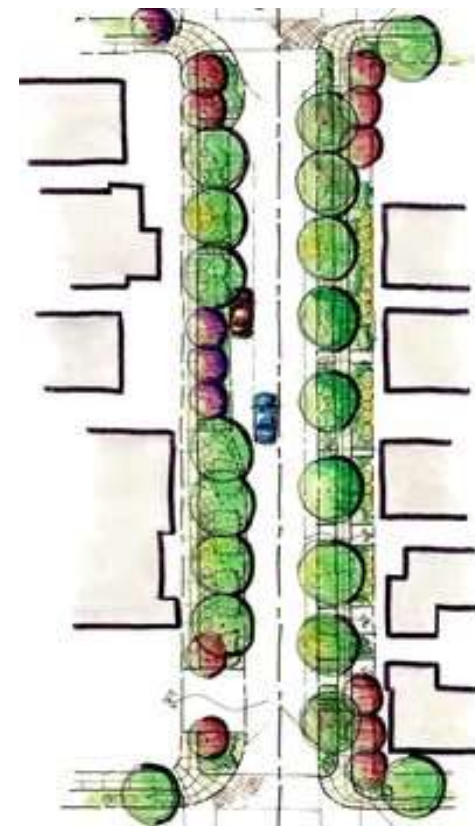
Project Planning Goals

- Improvements within existing public right-of-way
- Aesthetic improvements
- Improved pedestrian safety
- Optimize traffic flow



Next Steps

- Gather your feedback
- Develop preliminary streetscape design
- Additional public meetings
- Final design
- Construction not yet funded



S.W.O.T. Analysis



S = Strengths

W = Weaknesses

O = Opportunities

T = Threats

Strengths

- Some landscape buffers in areas close to downtown
- Pedestrian amenities through community engagement
- Crosswalks at some intersections



Weaknesses

- Bus stops lack seating
- No bike infrastructure
- Incomplete crosswalk network
- Few opportunities to cross streets mid-block
- Inadequate buffer between cars and pedestrians



Opportunities

- Current road width is adequate
- Great connection to downtown
- Room for creativity at Discount Plaza
- Chance to create a downtown gateway



Threats

- Inadequate pedestrian buffers could deter more walking trips
- A lack of mid-block crosswalks could lead to increased traffic incidents



Grant Ave Design Spectrum



Maintaining Current Lanes

- Aesthetic Changes
- Enhance Pedestrian Safety and Connectivity
- Making Lane Widths Uniform

Changing Current Lanes

- Replace Left Lanes with Central Turning Lane/Planted Median
- Repurposing Gained Lane Space with Pedestrian/Bike Amenities



We Want Your Feedback!



Breakout Station 1: Existing Conditions | Map Your Walk



We Want Your Feedback!

Breakout Station 2: Streetscape Precedent Images



We Want Your Feedback!



Breakout Station 3: Streetmix Exercise

How to Use Streetmix

Grant Avenue at **Discount Plaza**
Current Street Layout



Typical Sizes of Street Elements:

- **Drive lanes** 10-11 feet (wider if it's shared with buses or bikes)
- **Parking lanes** 7-8 feet
- **Bike lanes** 5-6 feet
- **Trees/street furniture area** 4-5 feet (can go together)
- **Bus shelter** 7 feet
- **Sidewalk** 6 feet (shops and restaurants prefer 8-10 feet)

1. **Name the street** and set the width at 60 feet.
2. **Think** about who needs to use the street you are designing (Pedestrians? Buses? Bikes? Parking? Parking?)
3. **Choose** from the street pieces at the bottom of the screen (Sidewalks, Trees, Etc.)
4. **Drag and drop** them into place. Be careful not to exceed the width of the street!
5. **Resize** your street pieces as desired.
6. **Repeat** until you've got Grant Avenue the way you like it.
7. **Save your street!**

Grant Avenue Streetscape Project

Visit the project website and sign-up to receive updates at:
www.manassacity.org/grantave

June 29, 2016

